

HATSIOS

UNIT A2

LOFOS RESIDENCES  
IRAS, NEFELIS & PERSEOS  
PSYCHIKO

# A2

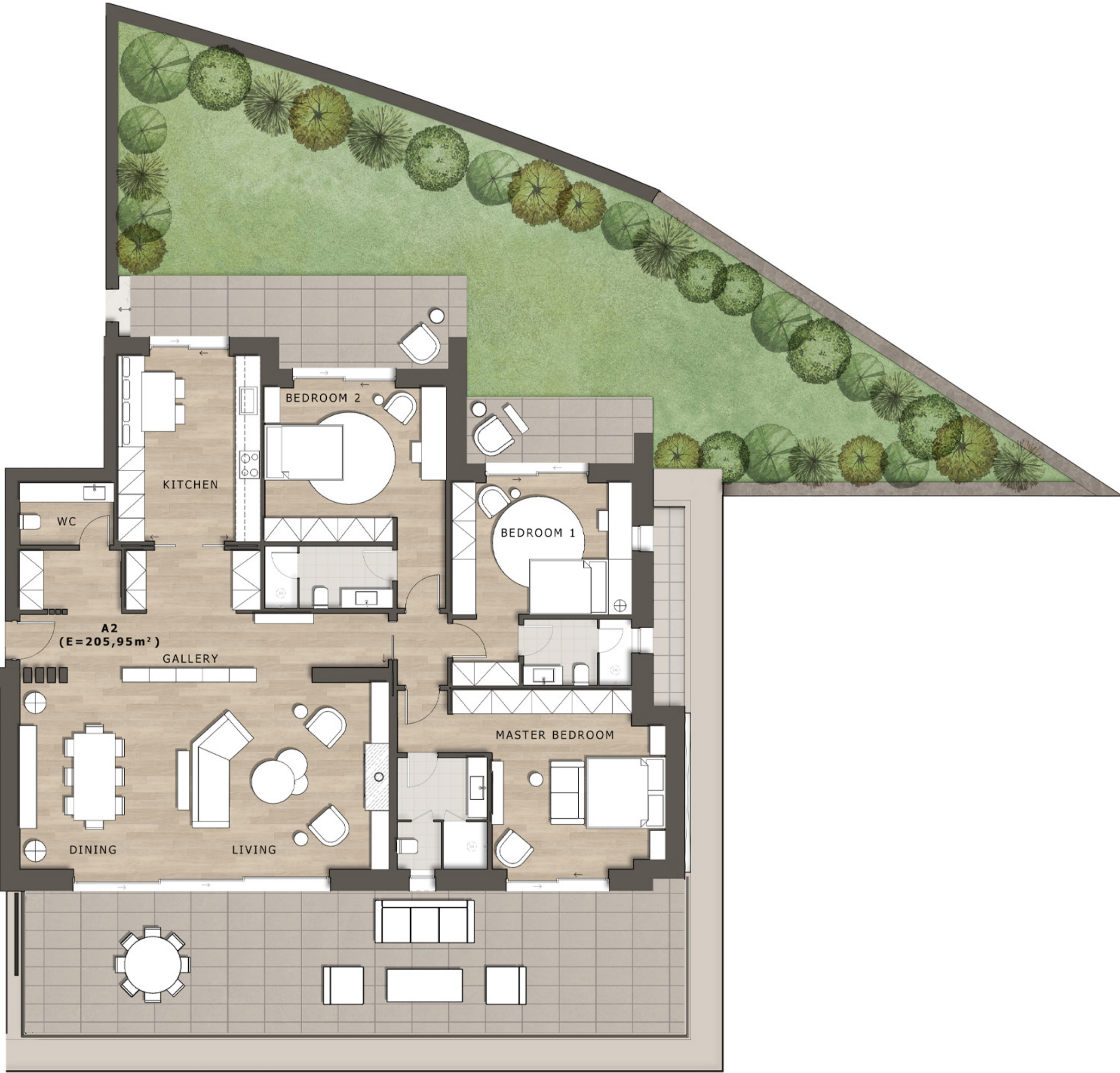
## BUILDING A / GROUND FLOOR THREE-BEDROOM APARTMENT 229 SQ.M

This residence offers a spacious living & dining area, a kitchen with a casual eating nook, and a guest WC. Each of the three bedrooms features an en-suite bathroom. Outdoor living is highlighted by a front balcony with city views and a 150sqm private garden. A staff room is located on a lower level.

| AREAS         | SQ.M(M²)                         |
|---------------|----------------------------------|
| Internal area | 229.22 <i>(incl. staff room)</i> |
| Balcony area  | 59.94                            |
| Garden area   | 150.56                           |

| RESIDENCE SUMMARY |                              |
|-------------------|------------------------------|
| Bedrooms          | 3                            |
| Bathrooms         | 3 (all en-suite)             |
| WC                | 1                            |
| Staff Room        | Yes (via communal staircase) |
| Parking Spaces    | 2 (underground)              |

**FLOOR PLAN DISCLAIMER**  
Internal areas are measured to the outside boundaries of the exterior walls and include elements within the Unit's outline. Balcony areas are measured as the net area of private balconies attached to the Unit. Garden areas include landscaped spaces and any paved outdoor areas that belong solely to the Unit, including retaining walls or other permanent features forming part of the garden. Please note that changes may occur during construction, and dimensions, fittings, finishes, and specifications may vary without notice. Units are delivered unfurnished, and any furniture or amenities shown are for illustration only.



Floorplan of the main floor.



# A2

## UNIT OVERVIEW

### 229 SQ.M THREE-BEDROOM APARTMENT

Level 0 / Residence Main Floor  
**206sqm**



Level -1 / Staff Room, Parking & Storage Room  
**23sqm** Staff Room + 2 Parking Spaces + 9sqm Storage Room

