

HATSIOS

UNIT A5

LOFOS RESIDENCES
IRAS, NEFELIS & PERSEOS
PSYCHIKO

A5

BUILDING A / LEVEL +2 THREE-BEDROOM APARTMENT 296 SQ.M

This top-floor residence opens to a spacious entry hall and features a living & dining area, a kitchen, three master bedrooms, and a guest WC. The highlight of this home is the 100 sqm private terrace with panoramic views. A private lift provides direct access to a lower-level staff room with laundry facilities.

AREAS	SQ.M(M²)
Internal area	295.98 <i>(incl. staff & laundry room)</i>
Balcony area	170.66

RESIDENCE SUMMARY	
Bedrooms	3
Bathrooms	3 (all en-suite)
WC	1
Staff Room	Yes (direct lift access)
Parking Spaces	3 (underground)

FLOOR PLAN DISCLAIMER
Internal areas are measured to the outside boundaries of the exterior walls and include elements within the Unit's outline. Balcony areas are measured as the net area of private balconies attached to the Unit. Garden areas include landscaped spaces and any paved outdoor areas that belong solely to the Unit, including retaining walls or other permanent features forming part of the garden. Please note that changes may occur during construction, and dimensions, fittings, finishes, and specifications may vary without notice. Units are delivered unfurnished, and any furniture or amenities shown are for illustration only.



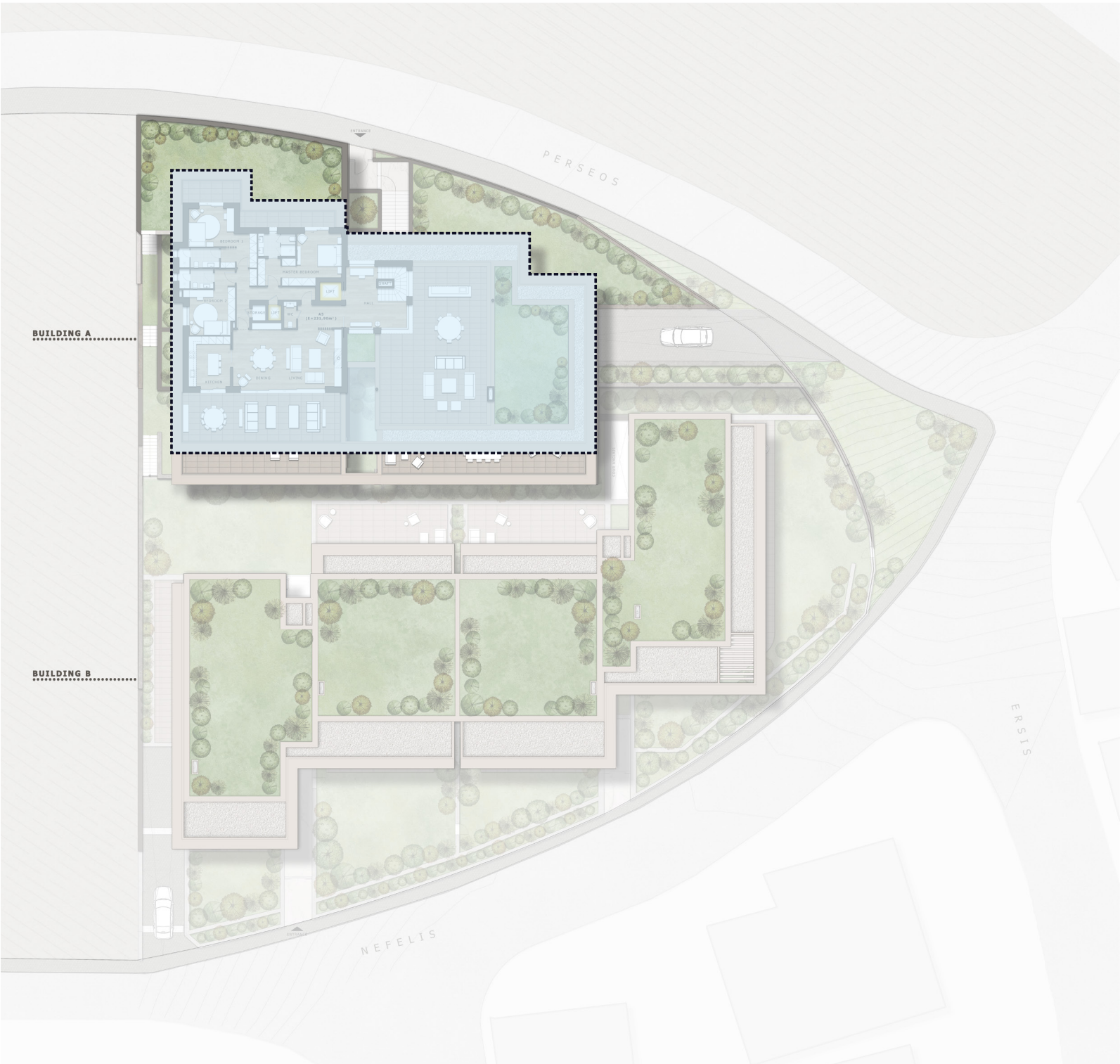
Floorplan of the main floor.

A5

UNIT OVERVIEW

296 SQ.M THREE-BEDROOM APARTMENT

Level +2 / Main Floor
232sqm



Level 0 / Staff Room & Laundry Facilities
64sqm



Level -1 / Parking & Storage Room
3 Parking Spaces + 13sqm Storage Room

